

VHC-15


VARIABLE HEAT CONTROLLER

for

QUARTZ TUBE (CONSTANT-RESISTANCE) HEAT SOURCES



For quartz lamp (tungsten) heat sources refer to Fostoria model VHC-32 p/n 04853502

	⚠ WARNING
	<p>IMPORTANT SAFETY INFORMATION INSIDE</p> <ul style="list-style-type: none">• Serious injury or death possible• Read, understand, and follow all safety information and instructions in this manual before using or servicing this product.

REFER TO COMPLETE INDEX OF INFORMATION ON PAGE 2





INDEX

Index	Page 2
Safety Signal Word Definitions	Page 2
General Description & Use	Page 3
Specifications	Page 3
Wiring	Page 4
Limited Warranty	Page 5



ATTENTION:

The table to the right provides definitions of the signal words that can be found throughout this manual. These signal words are used to express the severity of the hazard at hand. The signal words are generally used in conjunction with safety symbols that correspond to the text for that particular hazard. As you read this manual, refer back to this table when you are unsure of the signal word definition.

SIGNAL WORD DEFINITIONS	
	DANGER indicates an imminently hazardous situation which, if not avoided, will result in death or serious injury.
	WARNING indicates a potentially hazardous situation which, if not avoided, could result in death or serious injury.
	CAUTION indicates a potentially hazardous situation which, if not avoided, may result in minor or moderate injury.
	CAUTION used without the safety alert symbol indicates a potentially hazardous situation which, if not avoided, may result in property damage.
<small>As defined in ANSI Z535.4-2002</small>	

GENERAL DESCRIPTION & USE

⚠ WARNING





**ELECTRICAL SHOCK HAZARD
FIRE HAZARD**

- Serious injury or death may occur.**
- Not for indoor residential use.**
- Do not use in locations containing hazardous or explosive atmospheres.**
- Do not use outdoors in wet conditions and in unprotected locations.**

The Fostoria VHC-15 Variable Heat Controller is a solid-state power control designed to provide a convenient way to adjust heat output on electric infrared heating elements. The faceplate includes the heat intensity control knob.

Use the VHC-15 to control heaters on patios, in shelter houses or other protected outdoor environments.

One (1) VHC-15 is designed to operate one (1) quartz tube heater.

The VHC-15 can be used with any of the following Fostoria heaters:

MODEL	WATTS
OCH-46-120V (-SS)	1500
OCH-46-208V (-SS)	2000
OCH-46-240V (-SS)	2000
OCH-57-208V (-SS)	3000
OCH-57-240V (-SS)	3000
CH-46-C	1500
CH-57-C	3000

Note: Faceplate may become warm to the touch during use; this is normal.




SPECIFICATIONS

- 120/208/240 V A.C. single-phase “In-Line” controller
- Built-in On/Off switch with surface plate included
- Designed for 2”x 4” electrical wall box mounting (not supplied)
- Will operate: One (1) quartz tube (rated under 15Amps).

CAUTION

The initial current inrush of a quartz lamp (tungsten type heat source) is very high; as much as 10 – 15 times the steady-state current. Operating any quartz lamp with this product will damage the control.

⚠ WARNING

ELECTRICAL SHOCK HAZARD

- Serious injury or death may occur.**
- Disconnect from electrical supply before installing or servicing this product.**
- Read, understand, and follow all wiring and installation instructions below.**

WIRING

WARNING

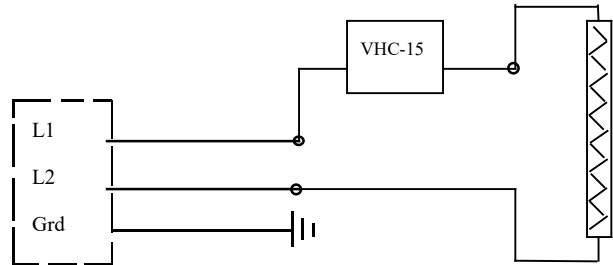
ELECTRICAL SHOCK HAZARD

- Serious injury or death may occur.
- Disconnect from electrical supply before installing or servicing this product.
- Make certain the power source conforms to specifications on heater label.
- Always securely connect green wire from heater to bonding (ground) wire from electrical supply, not to a live or “hot” conductor.
- Use 12 AWG, 90° C rated copper wire only. Maximum 50 ft. run.
- Follow state, local and national electric codes (NEC).



For field wiring, refer to the Installation manual included with your heater and wire the VHC-15 in-line with the ungrounded, hot leg of the power supply (see diagram below) with wire nuts.

All wiring must be performed by a licensed electrician.



LIMITED WARRANTY

Products manufactured by TPI Corporation are warranted to the original consumer to be free from defects in material and workmanship for twelve (12) months from the original purchase date.

The TPI limited warranty does not cover products that have been modified outside of our factory, damage or failure caused by acts of God, abuse, misuse, connected to or placed on other than rated voltage, abnormal usage, fault, installation, failure to follow suggested maintenance procedures enclosed with the product, improper maintenance or any repairs other than those provided by an authorized TPI service center.

There are no obligations or liabilities on the part of the Corporation for consequential damages arising out of or in connection with the use or performance of the product or other indirect damages with respect to loss of property, revenues, profit, costs of removal installation, or reinstallation.

All implied warranties with respect to TPI products, including implied warranties for merchantability and implied warranties for fitness, are limited in duration to twelve (12) months from original date of purchase, except those products or parts of products which are warranted for long periods thereon.

Some states do not allow the exclusions or limitation of incidental or consequential damages and some states do not allow limitations on how long an implied warranty lasts. The above exclusions or limitations may not apply to you.

During the warranty period, TPI Corporation will, at its sole option, repair or replace any defective parts or products returned, freight prepaid, to the TPI Corporation factory or such other locations as TPI Corporation may designate. Returned products must be packaged carefully and TPI Corporation shall not be responsible for damage in transit.

When returning parts, the owner must provide the model number of the product and nature of difficulty being experienced. This warranty does not obligate TPI Corporation to bear the cost of labor in replacing any assembly, unit or component part thereof, nor does the company assume any liability for secondary charges, expenses for installing or removal, freight or damages. There will be charges rendered for product repairs made after the warranty period has expired. Proof of purchase, including date, must accompany request for in-warranty service. In any event, TPI Corporation's maximum liability shall not in any case exceed the list price for the product claimed to be defective. This warranty gives to you specific legal rights and you may have other rights, which may vary from state to state. For the name of your nearest authorized TPI Corporation service center, please write to TPI Corporation, P.O. Box 4973, Johnson City, TN 37602.

HEATING PRODUCTS WARRANTY COVERAGE	
Heating Products Elements in	10 Years
Baseboards	1 Year
All other Heating Products	2 Years
Thermostats and Controls	

VENTILATION PRODUCTS WARRANTY COVERAGE	
Series HD or HDH Fans	5 Years
Series UHP or IHP Fans	3 Years
All other Ventilation Products	1 Year